

PART OF THE S.1/2, OF SECTION 11, T.6N., R.2E., S.L.B. & M.  
**GATEWAY ESTATES SUBDIVISION PH 1A**

181

IN WEBER COUNTY

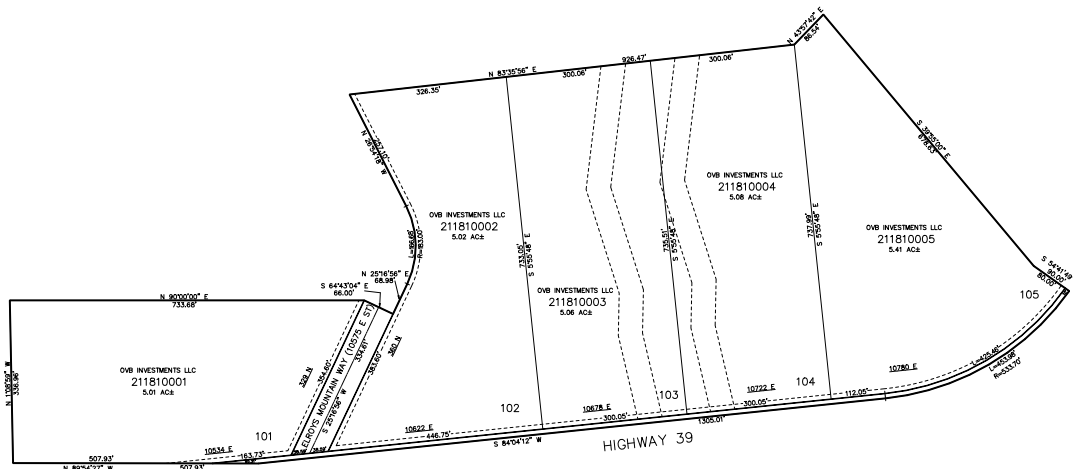
SCALE 1" = 200'

TAXING UNIT: 520

SEE PAGE 13

SEE PAGE 13

SEE PAGE 13



SEE PAGE 13

10' UTILITY & DRAINAGE EASEMENTS EACH  
 SIDE OF PROPERTY LINES AS INDICATED  
 BY DASHED LINES EXCEPT AS OTHERWISE  
 SHOWN.

FOR COMPLETE SURVEY DATA SEE  
 ORIGINAL DEDICATION PLAT IN  
 BOOK 97, PAGE 37 & 38 OF RECORDS.